



Recreational Pre-Season Briefing 2019

Coming up...

- Introduction to the Harbour Masters and the PLA
- What's new?
- Thames Vision update
- A day in the life of a tug master
- PLA Hydrographics Service
- Creeks and backwaters
- Q&A

Harbour Master Upper Team



Mark Towns
Harbour Master (Upper)



Nick Evans
Deputy Harbour Master (Upper) 1



Josh Rylah
Deputy Harbour Master (Upper) 2



Darren Knight
Assistant Harbour Master (Recreational)

Harbour Master Lower Team



Cathryn Spain
Harbour Master (Lower)



Timothy Corthorn
Deputy Harbour Master (Lower)

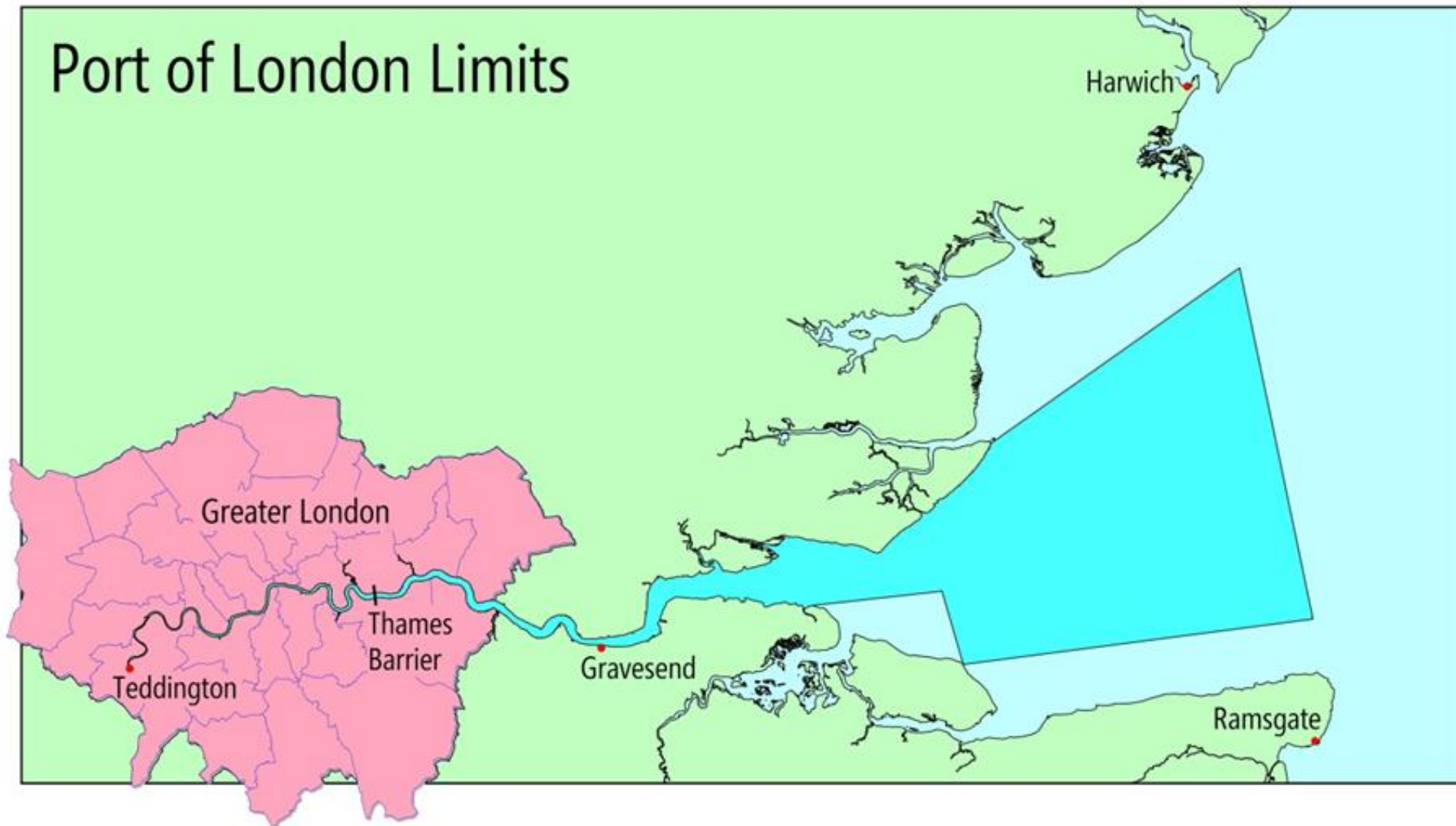


Lyn Kindlen-Funnell
Deputy Harbour Master (Lower)



Miles Featherstone
Assistant Harbour Master (Lower)

Port of London Limits



What the PLA does

River navigation and safety



Planning consultation and technical expertise



Bringing people together and promoting the river



Environmental stewardship

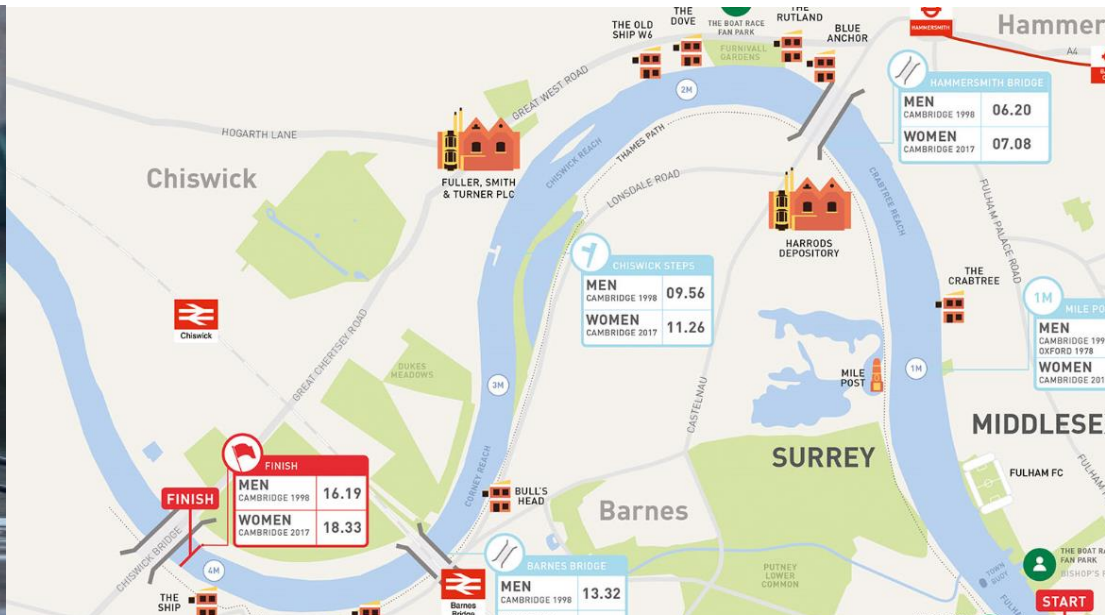




What's going on in the Port

The Boat Race

- The Championship Course is 4 miles, 374 yards or 6.8 km
- Mens 2018 winners – Cambridge by 3 lengths in a time of 17:51
- Women's 2018 winners – Cambridge by 7 lengths in a time of 19:06
- Oxford 80 Wins – Cambridge 83 Wins
- 2019 Race takes place on 7th April



Maserati Multi 70

- Hong Kong to London passing under the Queen Elizabeth II Bridge
- 36 days, 2 hours, 37 minutes
- They have improved the record by almost a week (5 days and 19 hours)
- The Italian trimaran travelled 15,083 nautical miles at an average speed of 17,4 knots



Cruise Ships

- Super yachts and cruise ships
- 48 visits to our 3 moorings in Central London and Greenwich - this does not include Tilbury Landing Stage
- Predominantly a summer season
- Local Traffic Control may be enforced



Warships

- British and Brazilian to Japanese and German
- Diplomatic engagements
- Traditional and military ceremonies
- ‘Flying the flag’



Mission Impossible Filming

- Promoting the river and City
- Little disruption to river traffic
- Weekend and morning filming



Traditional Events

Thames Apprentice Barge Driving Race

Tudor Pull

Thames Historic Barge Driving Race

Port of London Challenge

Doggett Coat and Badge Wager

Steve Faldo & Dave Pope Barge Races

Thames Apprentice Barge Driving Race

Greenwich Pier to Westminster Bridge

Teddington Lock to Tower of London

Greenwich Pier to Westminster Bridge

HQS Wellington to Chelsea Harbour Pier

London Bridge to Albert Bridge

Westminster Bridge to Tower Bridge

Greenwich Pier to Westminster Bridge



Motorbike Stunt

- Different events taking place throughout the year
- Minimal disruption to the river users'



New Years Eve

- Fireworks shot from barges and the London Eye itself
- 10,000 people on the river
- Over 90 passenger vessels on the lower and upper end of the closure
- Collaborative working alongside the blue light services
- Licencing procedures introduced



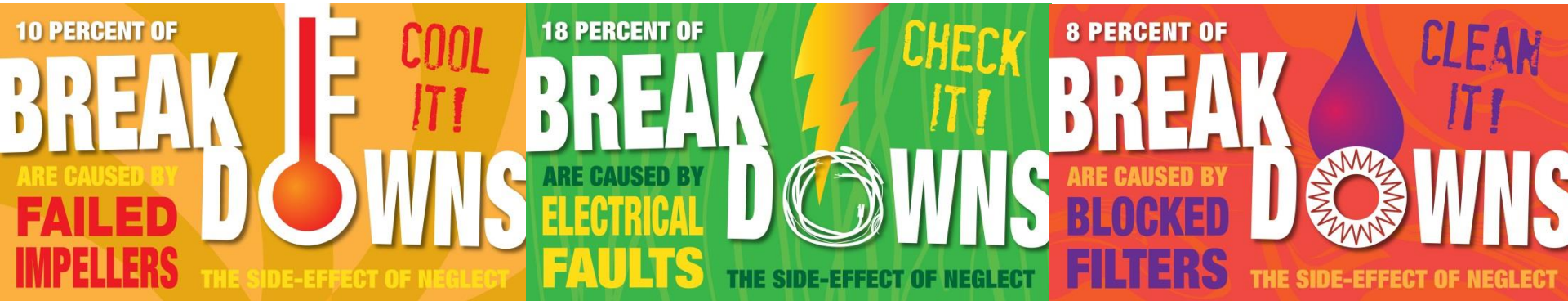
Future Activity

- Traditional Rowing Events U6 of 2019
- The Boat Race 7th April
- Thames Historic Barge Driving Race 6th July
- Doggett Coat and Badge 4th September
- Great River Race 14th September
- Big Ben Challenge 23rd September
- London Regatta 29th September
- New Years Eve Fireworks 2019

Please remember...

- Passage Plans

- Water depths ('Flag Status'), Bridge heights, Bridge Works, Navigation Lights, Rule of the Road (COLREGs, Byelaws, etc), Sporting Events (347 in 2018, up from 157 in 2017), etc



- Smart Bridge Control at Blackfriars Bridge

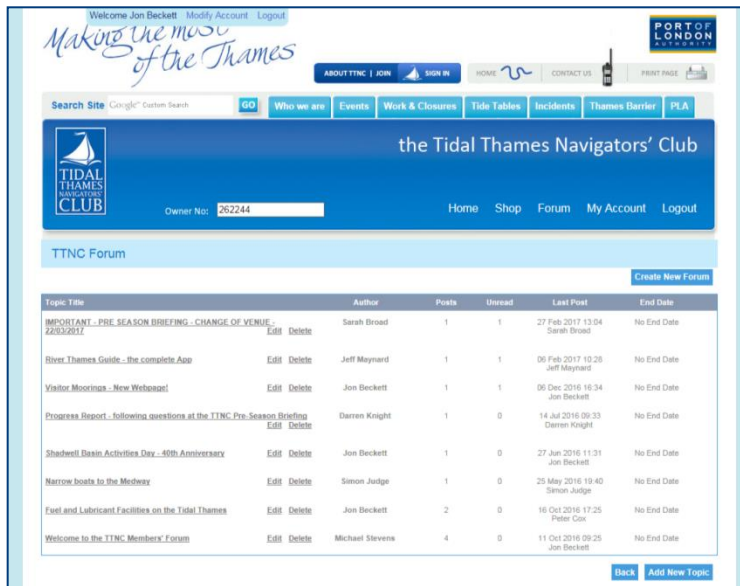


- Thames Tideway Tunnel

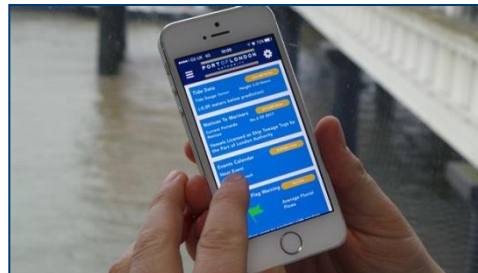
- Website: www.tideway.london
- 24-hr Helpdesk: 08000 30 80 80

Don't forget to look at...

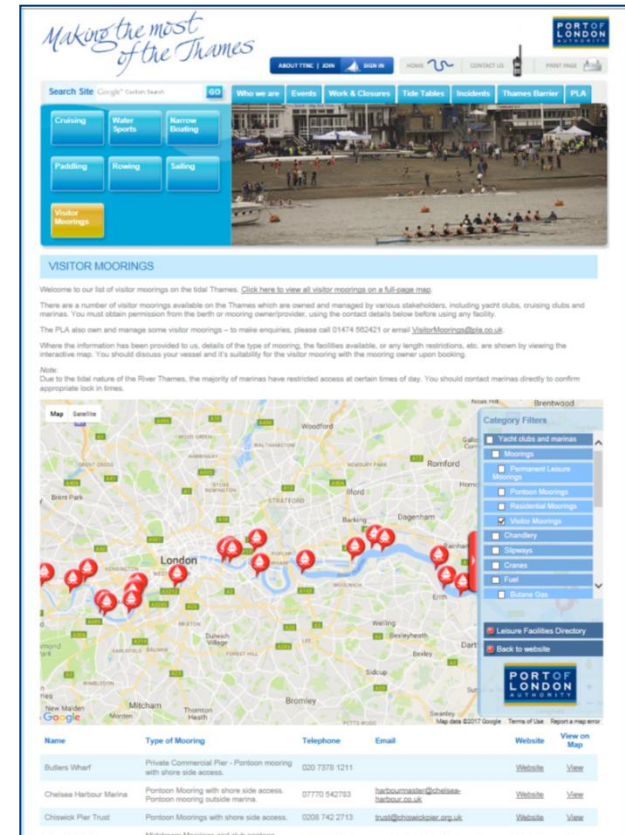
- TTNC Club Forum
 - Post questions, event reviews



- PLA App
 - Free to download



- Visitor Moorings
 - New webpage





Thames Vision Project

Thames Vision – Watersports Participation

- Nadine Collins-Smith, appointed as the Head of Thames Vision Delivery
- Regular liaisons with National Governing Bodies to foster opportunities and grow sports participation
- Established ‘East London Watersports Forum’
- Held three meetings to understand visitor mooring expectations and created a new ‘Mooring and Marina's Operators Forum’

Thames Vision – Sports Promotion Fund

- **£40k** to open up Thames water sports to more people
- Applications invited for grants **<£10k**, demonstrating:
 - Need & barriers to wider participation
 - Expected impact, with measurable targets
 - Local community support
 - Other financial support sought/obtained
 - Plans for maximising the investment long term
- Two rounds (deadlines – **29 March & 27 September**)



A day in the life of a Tug Master





Hydrographic Service

John Dillon-Leetch

Port Hydrographer

Hydrographic Responsibilities

NAVIGATIONAL SAFETY

Charts

Pilotage

Marine Services / Salvage Support

VTS

Incident Response

Wrecks / Obstructions

Liaison with UKHO and Trinity House

CONSERVANCY

Tidal Observations & Predictions

Dredging & River Regime

Implications of River/Marine Works

Archive Data

Hydrographic Fleet

MAPLIN



THAME



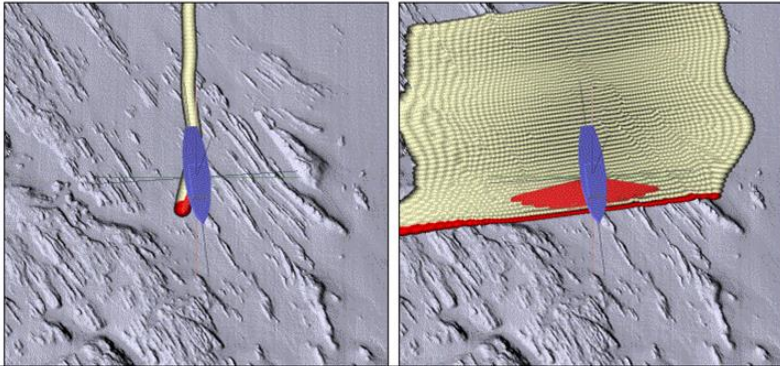
GALLOPER



**HYDRO
RIB**



Surveying Technology

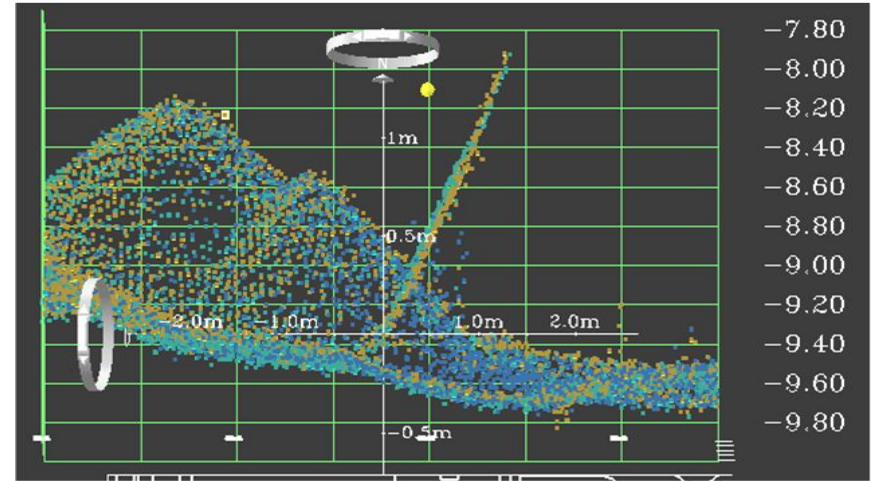


Single Beam

- grossly under samples
- minimum slant range only
 - (assumes vertical)

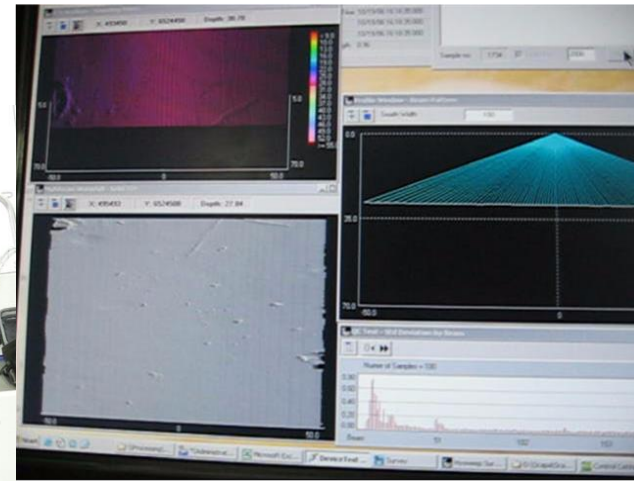
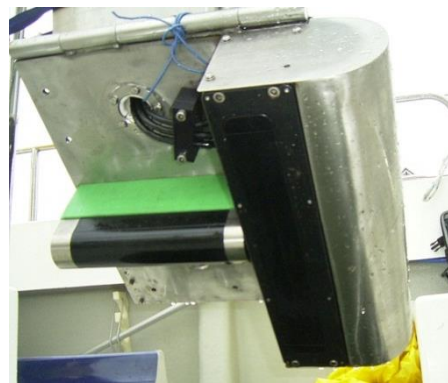
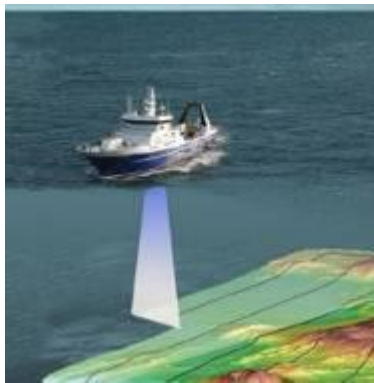
MultiBeam

- multiple solutions per ping (estimates azimuth and depression angle)
- close to 100% coverage
- resolves shorter horizontal wavelengths
 BUT still limited to beam footprint/spacing



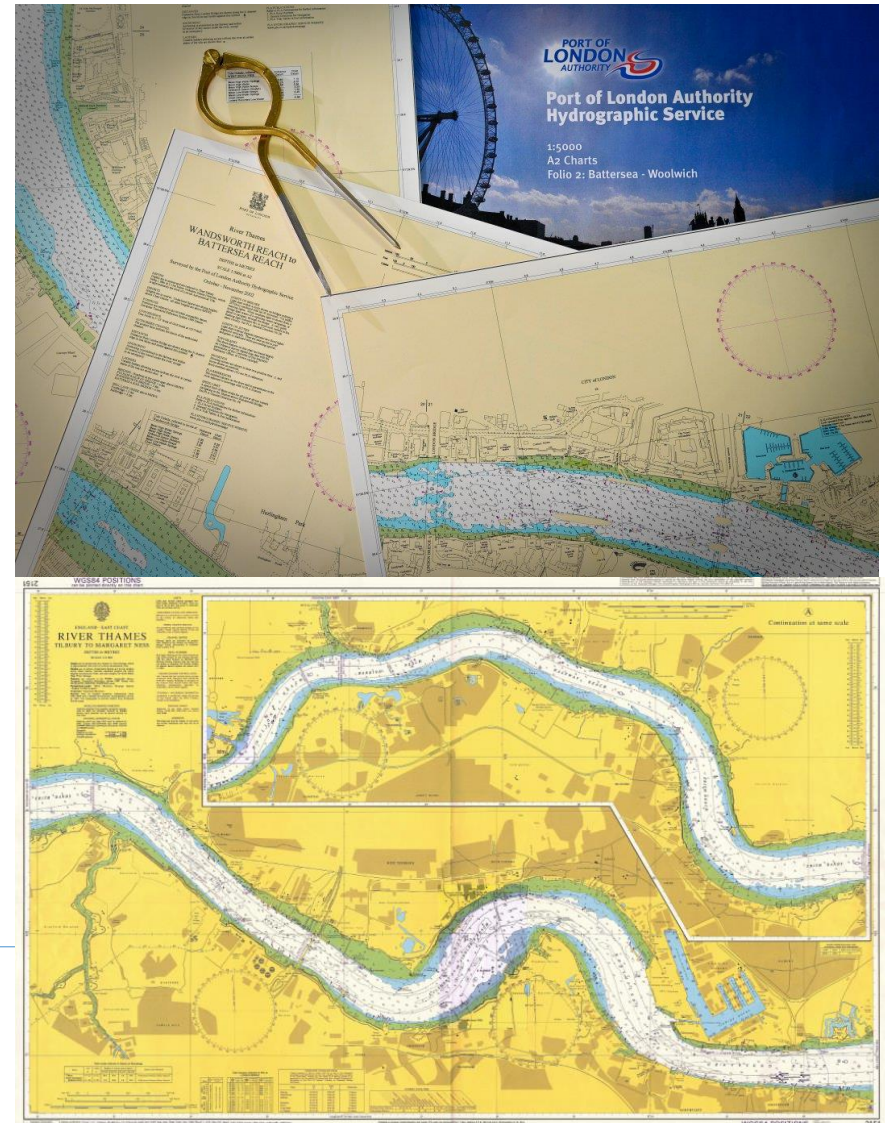
University of New Brunswick
CANADA

© J.E. Hughes Clarke, OMG/UNB



Charting / Depth Information

- Data populates UKHO charts for whole area.
- Larger scale A2 charts available from PLA for Teddington – Woolwich.
- UKHO charts of suitable scale for recreational vessels below Woolwich.



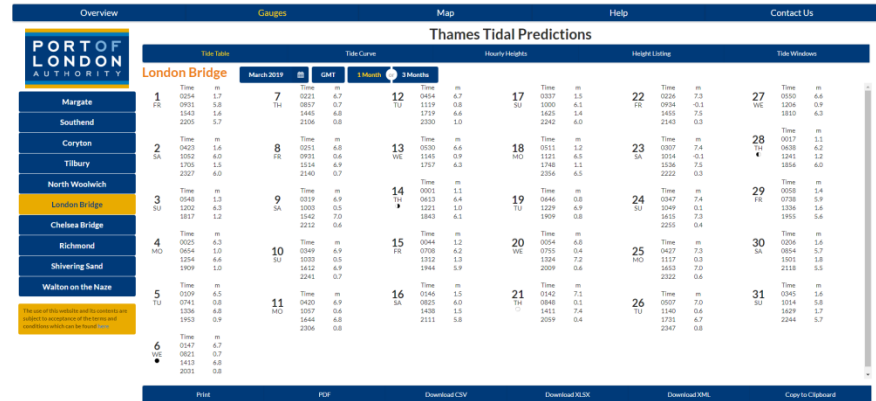
YOU ARE HERE > SAFETY > PLA HYDROGRAPHIC SERVICE: PUBLISHED SURVEYS

PLA Hydrographic Service: Published Surveys

Latest Editions and Corrections

Tidal Information

- Predictions available:
 - Tide Table Booklet (Heights)
 - Web Based Tool (Heights)
 - Diamonds on Admiralty Charts & Estuary Atlas (Streams)
 - Modelled Animations for Accident Hotspots (Streams)
- Live observations
 - PLA Website (Heights)
 - PLA App (Heights)

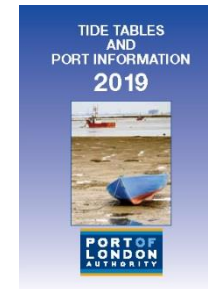
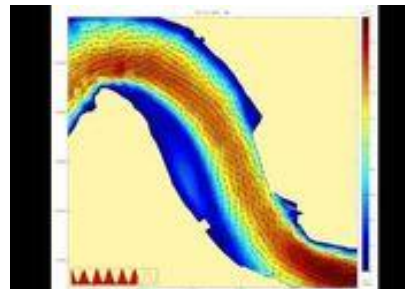


Live Tides Overview

19 Mar 2019 17:05:59 (All data at GMT)

Gauge Name	Observed (m)	Predicted (m)	Surge (+m)	Next HW	Next LW
Margate	0.79	0.77	+0.02	23:00 (4.57m)	05:32 (0.44m)
Walton	0.48	0.74	-0.26	22:40 (4.04m)	05:02 (0.25m)
Shivering	0.67	0.76	-0.09	23:12 (5.13m)	05:46 (0.36m)
Southend	0.61	0.76	-0.15	23:30 (5.59m)	17:25 (0.73m)
Thameshaven	0.71	0.85	-0.14	23:41 (5.93m)	17:38 (0.77m)
Denton	0.70	0.98	-0.28	00:03 (6.27m)	18:02 (0.74m)
Tilbury	0.82	0.99	-0.17	00:03 (6.27m)	18:02 (0.74m)
Silvertown	1.37	1.51	-0.14	00:34 (6.90m)	18:36 (0.80m)
Charlton	1.46	1.53	-0.07	00:34 (6.90m)	18:36 (0.80m)
Tower	1.87	2.04	-0.17	00:54 (6.85m)	19:09 (0.79m)
Chelsea	1.88	2.08	-0.20	01:08 (6.23m)	19:45 (0.45m)
Richmond	1.72	1.75	-0.03	01:55 (4.49m)	21:07 (0.14m)

Data refreshing in 6 seconds.



Other Useful Information

YOU ARE HERE > SAFETY > THAMES BRIDGES HEIGHTS

- Bridge clearances.
- Tidal time differences for secondary ports.

Thames Bridges Heights

Thames Bridge Clearances

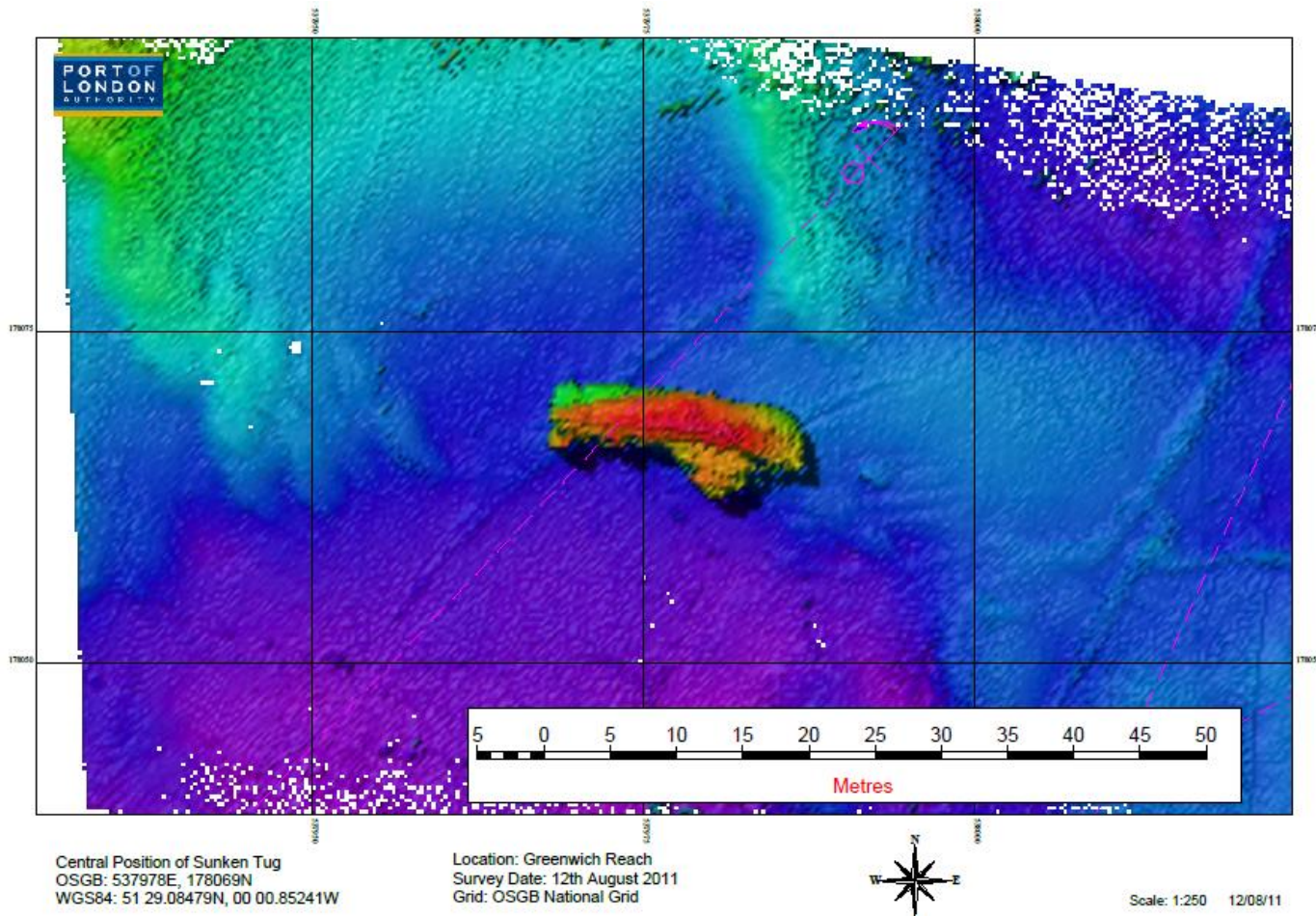
YOU ARE HERE > SAFETY > TIDE TABLES - AVERAGE TIME DIFFERENCES

Tide Tables - Average Time Differences

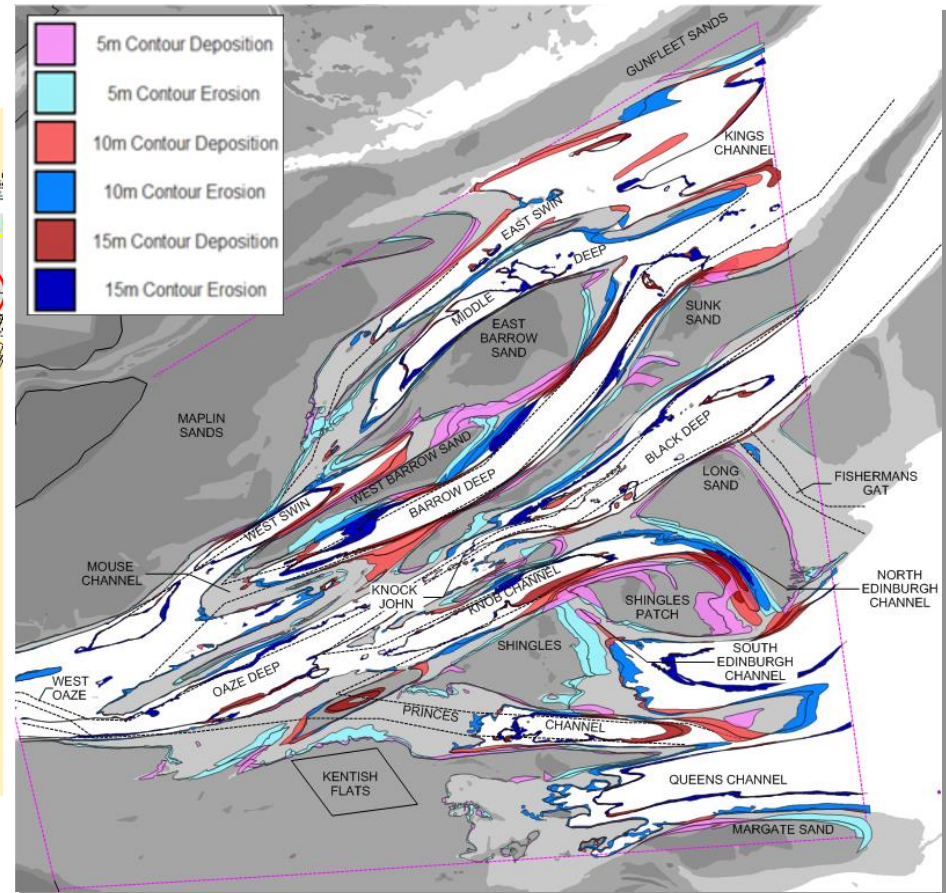
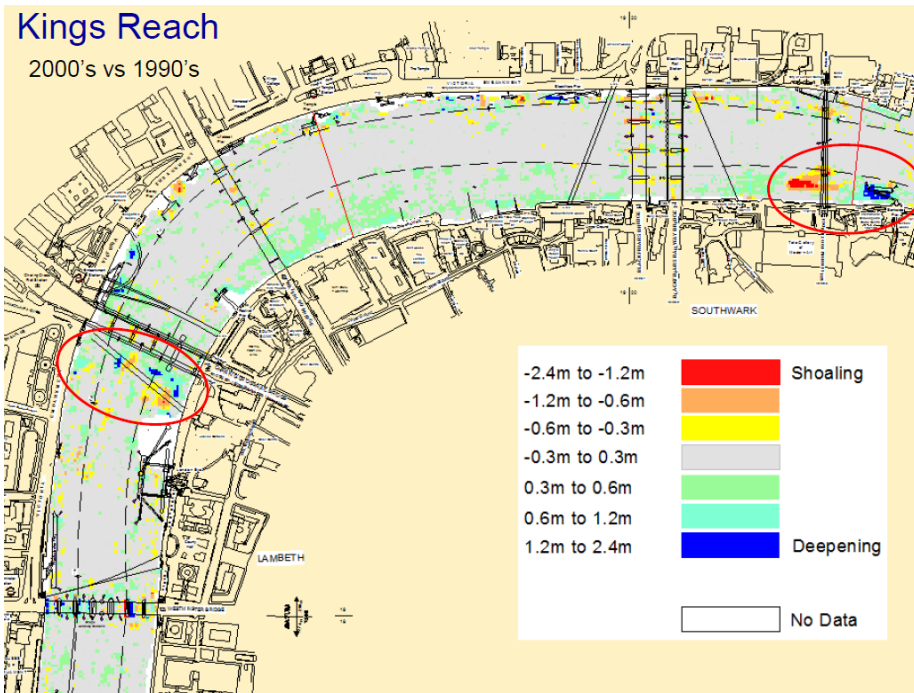
The times of high and low water at the following places on the River Thames may be found approximately by applying the differences shown to the times of high and low water given in the Tide Tables.

Differences on London Bridge (Tower Pier)
Differences on North Woolwich
Differences on Tilbury
Differences on Southend-on-Sea
Differences on Margate
Differences on Walton-on-the-Naze

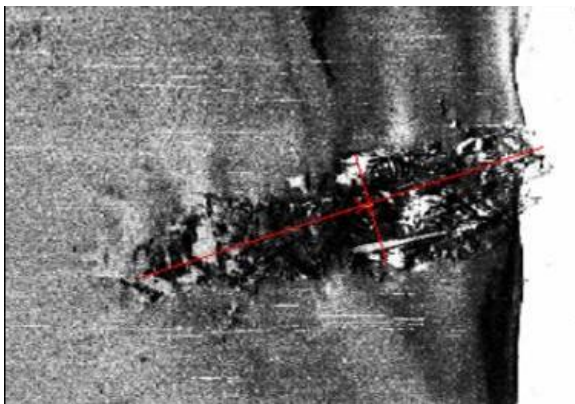
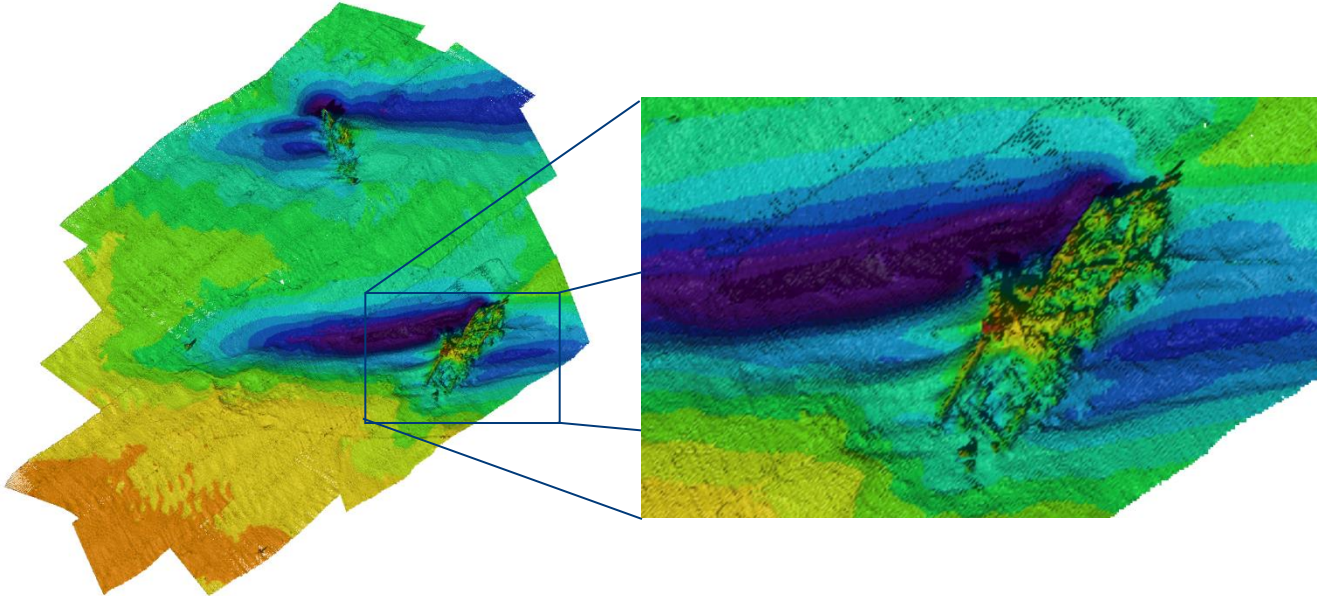
Incident Response



River / Sea Bed Dynamics – Decadal Change

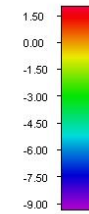
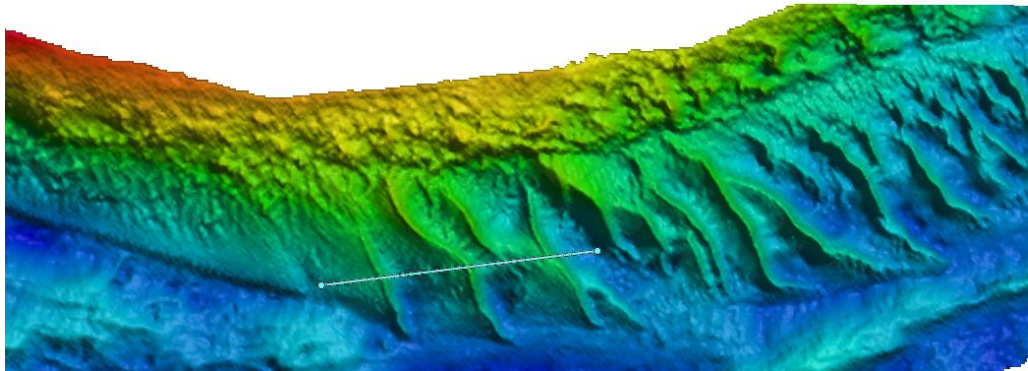


Wrecks



Name: Dovenby
Type: Steel Barque
Cargo: Guano
Sank: 1914

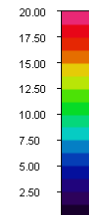
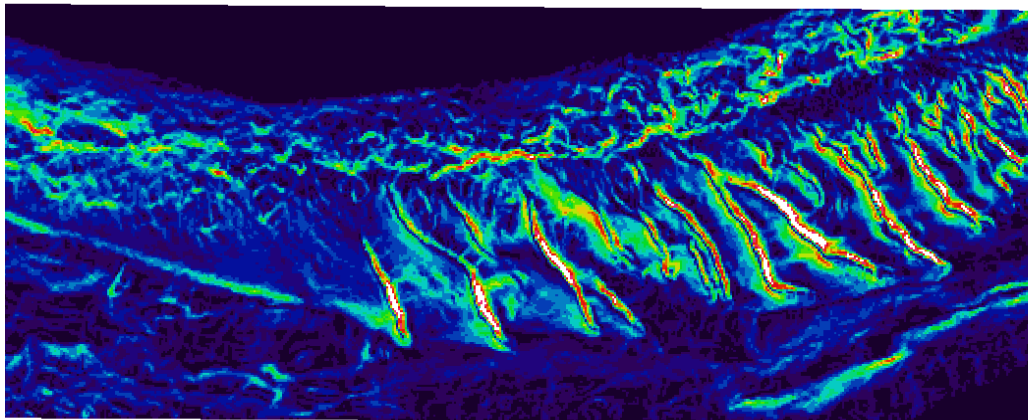
Surveying is More Than Just a Chart



Bathymetry

Red = Shallow

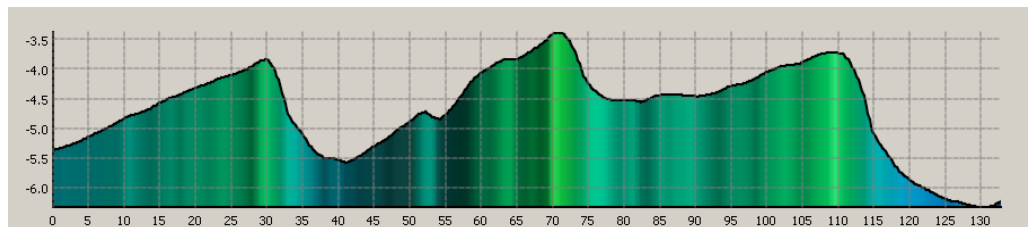
Blue = Deep



Slope

Red = Steep

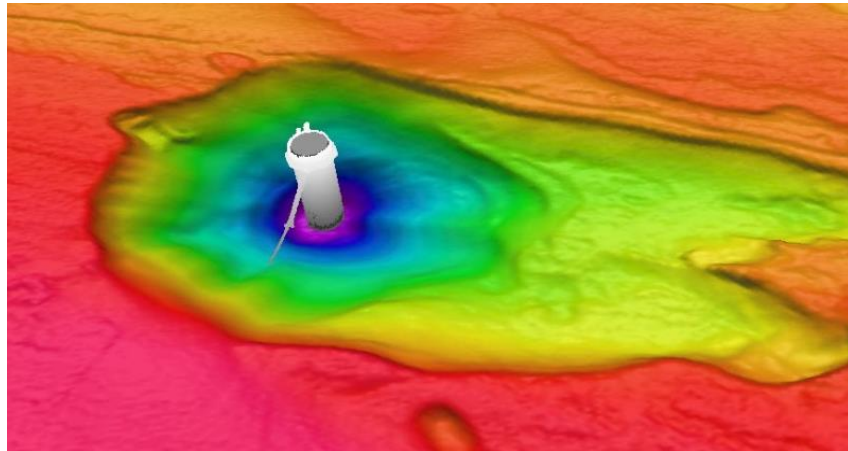
Blue = Gentle



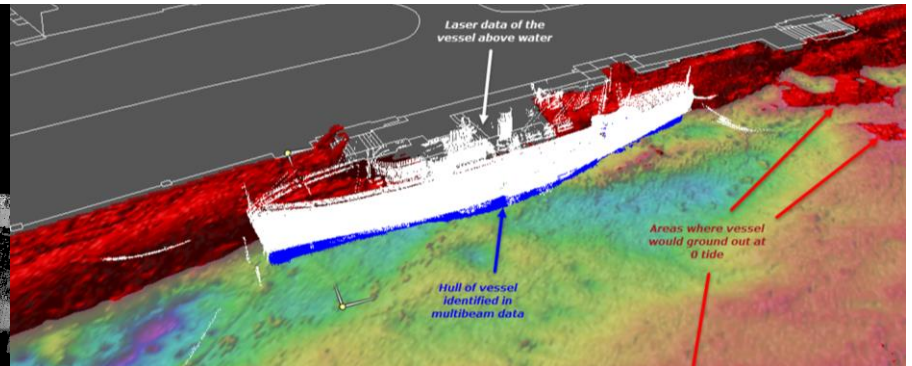
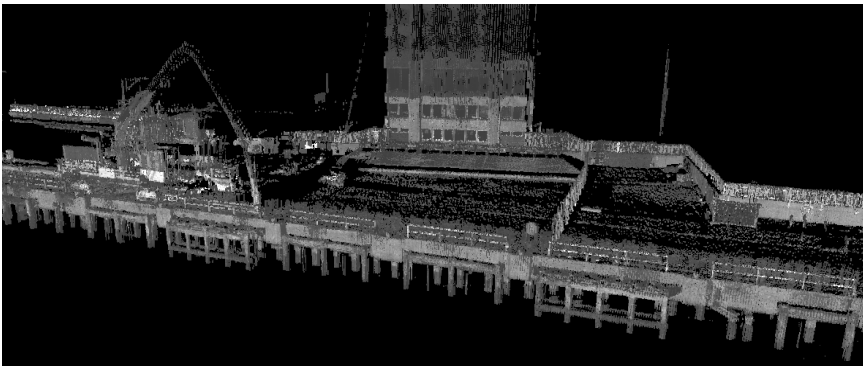
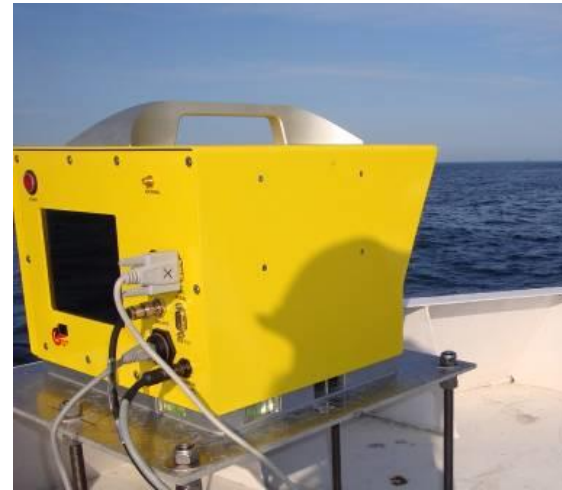
Profile

Vertically exagerrated

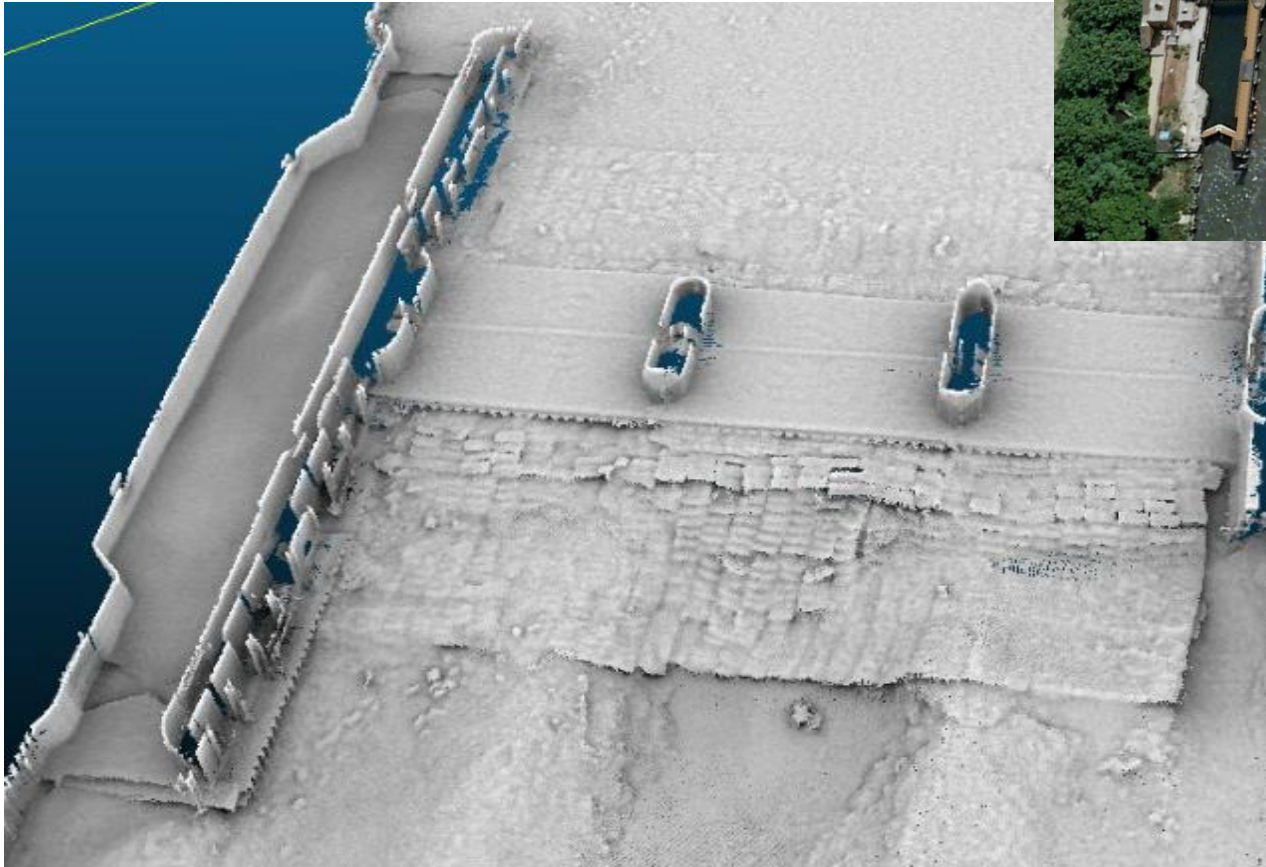
Monitoring Effects of River Works



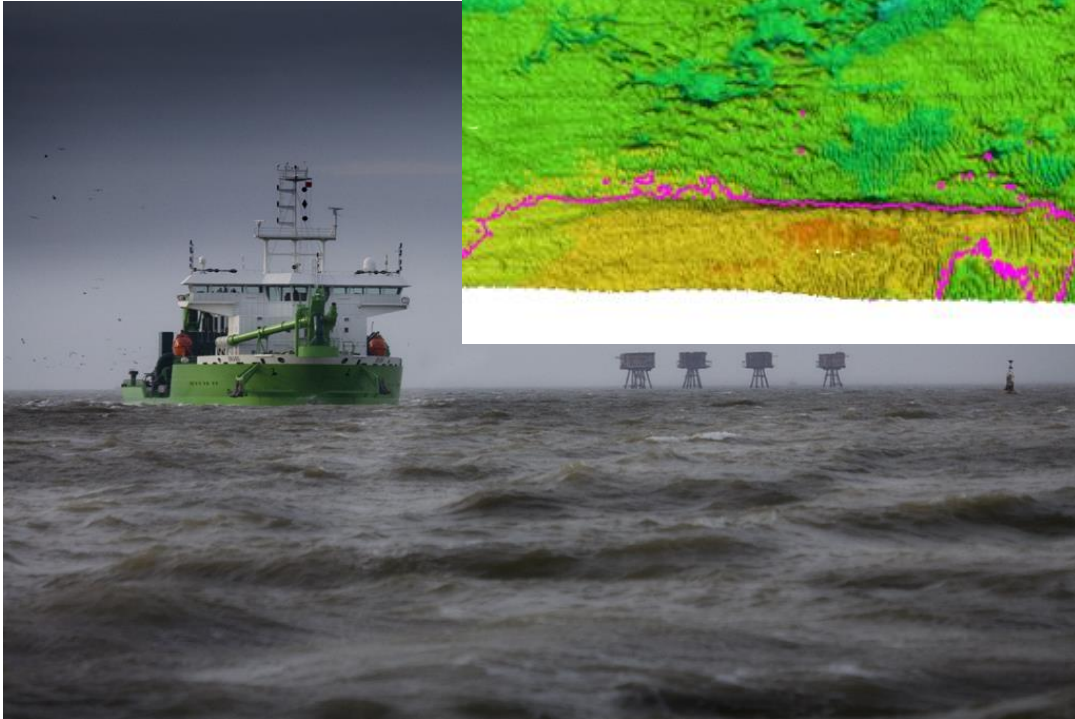
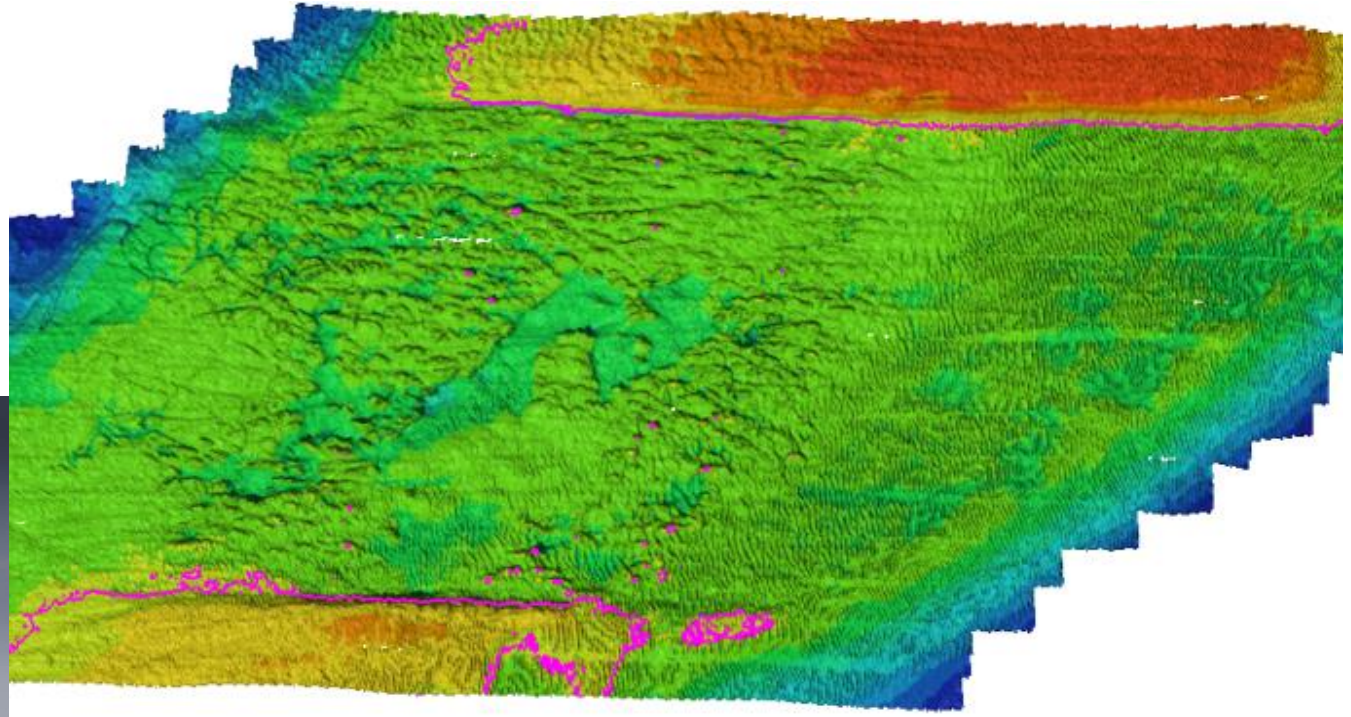
Port Terminals & Infrastructure



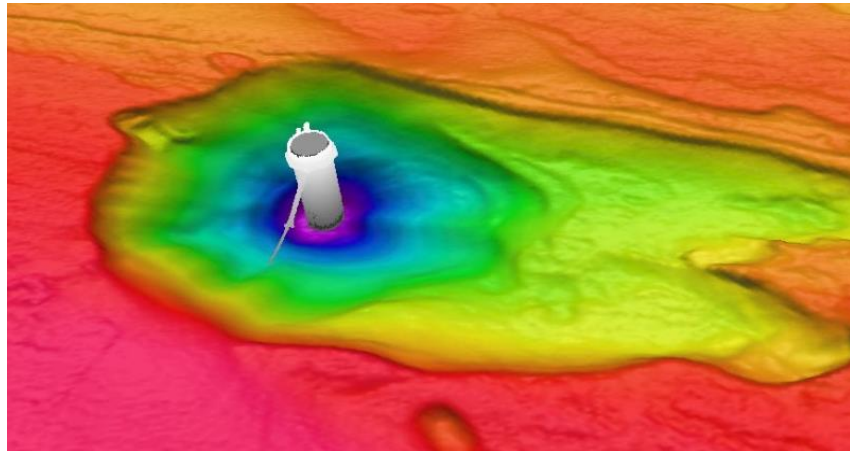
Other Structures – Richmond Lock & Weir



Monitoring Dredging Operations

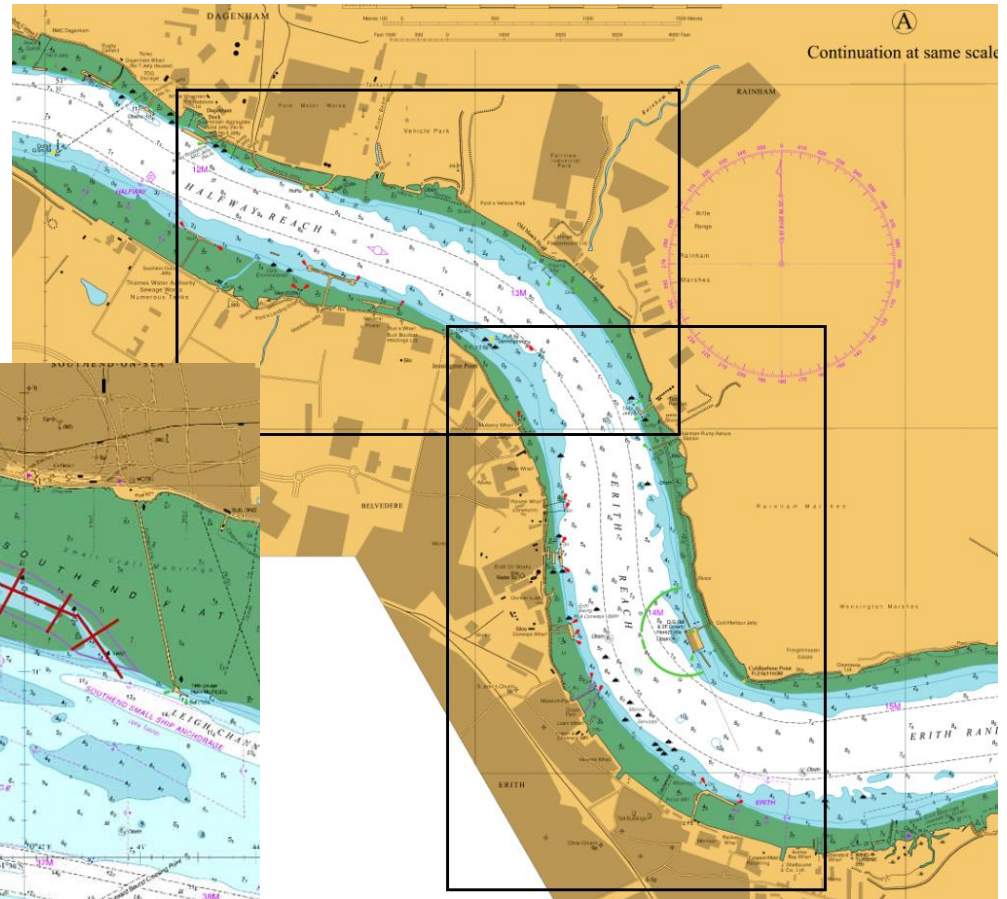
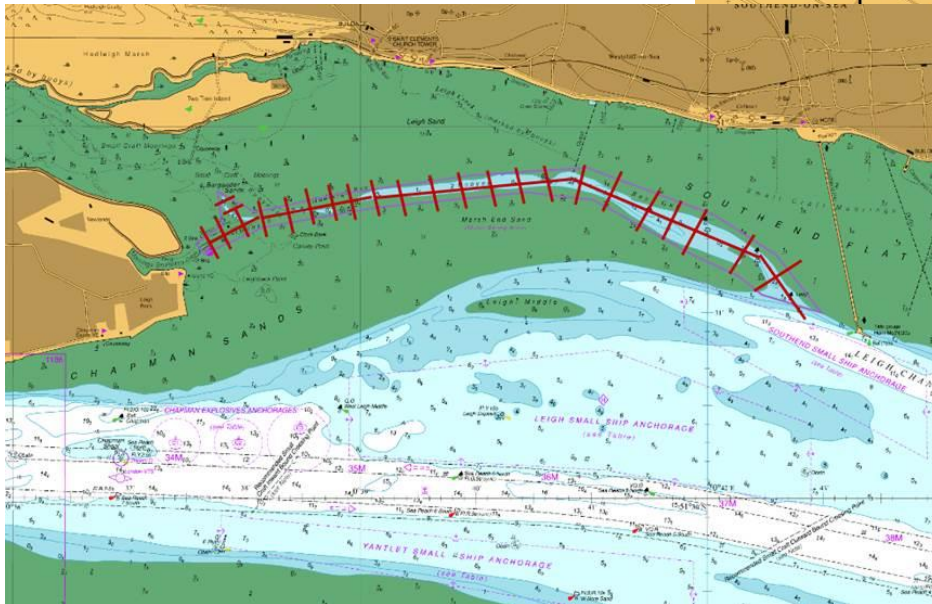


Monitoring Effects of River Works



Programmed Surveys for 2019 - River

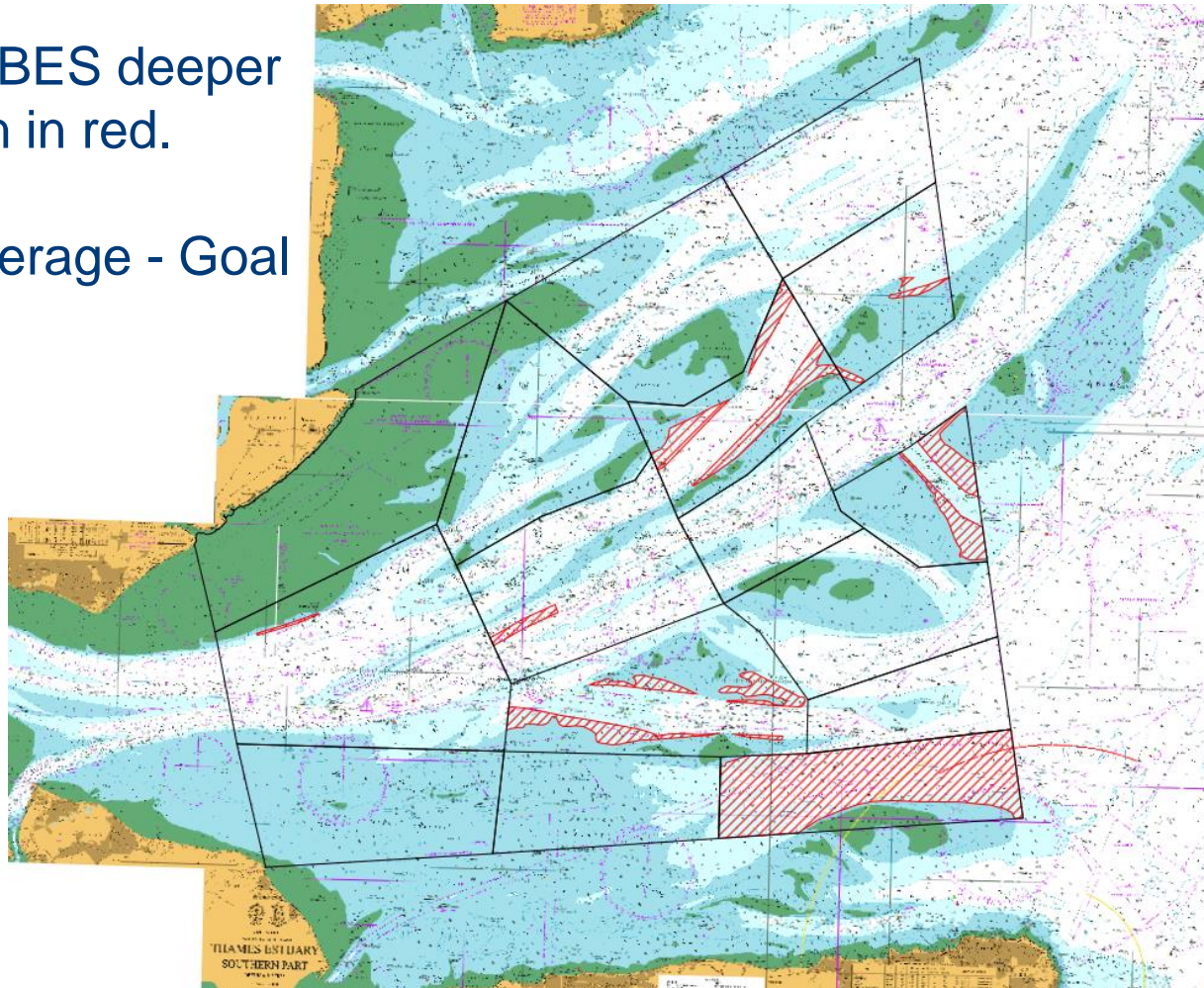
- The “hot-spots” - channels/shoals (90)
- Berths (60-100)
- Halfway Reach & Erith Reach
- Hadleigh Ray & Ray Gut
- + Infrastructure project monitoring



Programmed Surveys for 2019 - Estuary

Outstanding MBES deeper than 5m shown in red.

Full 100% Coverage - Goal





Up the Canvey Creeks (with an outboard or two!)

Miles Featherstone



ESSEX

Canvey
Island

London Gateway

KENT



Pitsea Creek

Vange Creek

Parting Gut
Fobbing Creek

Easthaven Creek

Benfleet Creek

Tewkes Creek

Holehaven Creek

Smallgains Creek

Hadleigh Ray















AGAPE

POLICE

HARBOUR MASTER

PORT OF
LONDON
AUTHORITY

14-17

EMERGENCIES

Always carry a mobile phone (in a buoyant water-proof case)
For life-threatening emergencies: **Coastguard – 999 or 112**
The Coastguard will send the appropriate assistance. Be prepared to give your name, location and the nature of the emergency

INCIDENTS

For navigational issues: **London VTS – 01474 569311**
VHF channel 68 or via the smartphone app
For non-emergencies: **Essex Police Marine unit – 01621 782121**
For non-emergencies: **Kent Police – 101**

SAFETY

Without proper training, using a personal watercraft can be dangerous. Machinery failure is the main cause of incidents, which can leave users vulnerable in a potentially busy waterway. There are also risks from the effects of cold water, currents, tides and exhaustion

How to stay safe:

Always wear an appropriate Personal Flotation Device (PFD). A well-fitted, well-maintained and suitable life jacket or buoyancy aid could save your life > www.rya.org.uk

Get the right training > www.rya.org.uk

Learn basic engine maintenance

Keep within your own level of ability and experience

Tell someone when you're going and when you expect to return

For further safety advice visit > nlii.org/safety

RESPECT THE WATER

Safety kit list

Suitable clothing
Appropriate PFD
Goggles
Kill cord
Foot protection
Gloves
Whistle
Navigation lights
Torch
First aid kit
Full tank of fuel/oil
Fire extinguisher
Flare pack (VHF Radio)
Rope
Anchor
Tool kit

Guidance document
www.pla.co.uk • www.boatingonthethames.co.uk

PORT OF
LONDON
AUTHORITY

Thames Code for Personal Water Craft

First edition, 2019



THE GOLDEN RULES

DO

Only launch, moor and land from Authorised Launch Sites

Read and observe the Byelaws and rules posted at launch sites

Ensure you have adequate public liability insurance and ID

Register with Datatag and clearly display your 'Datatag Visible ID'

Carry the correct safety equipment when afloat

Show consideration to other water users, particularly with your wake

Consider joining a local PWC club

Give ships a wide berth and always give way to larger vessels

DO NOT

Use a PWC upriver of **Lower Hope Point** (see diagram)

Enter PWC restricted areas

Exceed 8 knots within 200m of a berth, jetty, public beach, bathing place or residential property

Ride the bow waves of ships or cross close ahead of them

Generate wake when passing through moorings

Underestimate the speed or inability of manoeuvre of large ships

ALWAYS KEEP A GOOD LOOKOUT



TTNC Club Member Perks

Club River Trips

Friday 29 March

- Teddington to Putney
- Putney to Woolwich



Friday 12 April

- Teddington to Putney
- Putney to Woolwich



Thursday 2 May

- Woolwich to Putney
- Putney to Teddington



Bookings are limited and are available as of now.



IMPORTANT INFORMATION

We are currently in the process of putting together communication to all TTNC Members to confirm that they still wish to be an active member.

A deadline of one month will be given for all those who joined pre 2018 to respond to the email to state to us if they wish to remain a member or not. If no response is received within that period, the member will automatically be removed from the TTNC, but if this does happen there is always the option to re-sign back up.

The reason for doing this is so that the PLA are complying with GDPR (Data Protection Regulations). There is also a lot of 'inactivity' within the club, and the database needs an initial cleanse as it has not had one since its conception in 2012.

Following on from this, we would encourage all TTNC members to log on once or twice a year to keep their account active.

Changing Personal Details

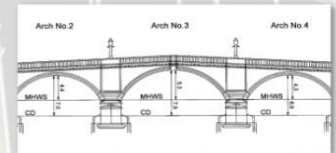
If you need to change any personal details, we encourage members to log on to their TTNC account at - <https://www.boatingonthames.co.uk/> and change themselves.

However, if any issues are encountered when logging into your account, please let us know by emailing TTNC@pla.co.uk



Guide to Bridges

MARINERS' GUIDE TO BRIDGES
ON THE TIDAL THAMES





Q & A Session